



DOVER SCHOOL DISTRICT

EMPOWERING ALL LEARNERS!

Dover Portrait of a Learner

May 2023

Who we are

Mission Statement:
Working collaboratively to
empower all learners to
become dynamic global
citizens.

The Dover School District is made up of

- 3 elementary schools (k-4)
- 1 middle school (5-8)
- 1 high school and career technical center (9-12)
- Includes approximately 3,700 students and 600 employees
- Includes students from Dover, Nottingham and Barrington

A composite image featuring a night sky with a ship's steering wheel in the foreground, birds flying, and the constellation Ursa Minor with Polaris labeled.

Polaris

Portrait of a Learner Purpose

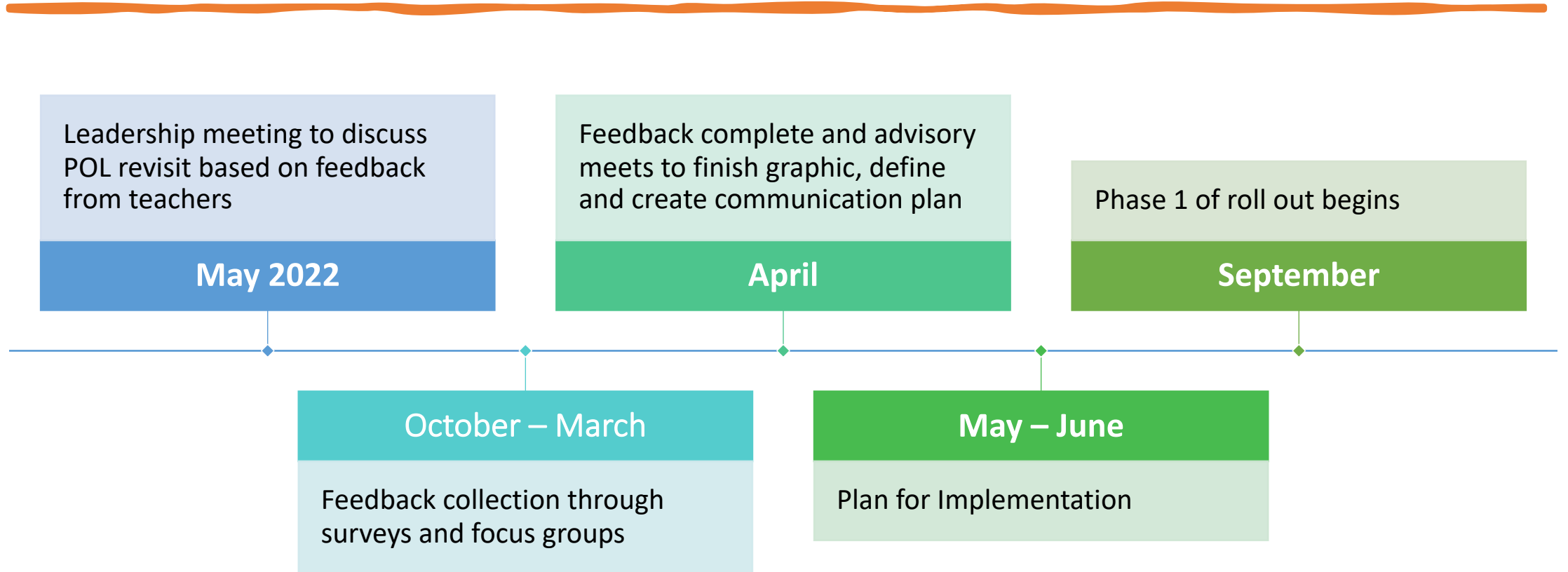
- Serves as the North Star for our district
- Serves as a collective vision to realize our mission



Inclusive Process

We continued to ask – who's missing?

Timeline



Stakeholder Feedback

Stakeholders

- Students, educators, families, community members, business owner

Collection Methods

- Surveys, focus groups, shared documents, previous Portrait of a Graduate work, whole staff professional development activities

Support

- New Hampshire Learning Initiative, Future Learning Pathways network

Feedback results



COMMUNICATION



COLLABORATION



CRITICAL THINKING



CHARACTER



LIFE SKILLS

Character

Understanding that you are unique

Being respectful to others

Knowing when to compromise

Know when not to compromise

Demonstrating perseverance

Taking care of yourself and others

Demonstrating digital citizenship

Be bold and have courage

Be trustworthy and dependable

Speaking clearly

Listening carefully

Understanding your audience

Using appropriate gestures and facial expressions

Using technology appropriately and safely

Choosing the correct tone for the correct situation

Monitor for miscommunication

Use your voice-advocate

Communication

Collaboration



Being productive on a team



Valuing different perspectives



Getting to know people on your team



Understand when it is time to lead, and when it is time to be a supporter



Be open minded



Be approachable



Be humble and accept criticism



Sharing your ideas

Being able to “think outside the box” to solve problems

Using your imagination

Knowing and using different strategies appropriate to the task

Think for yourself

Consider the source of information and determine if you trust that source

Monitor for misunderstanding

Identify biases, even your own

Critical Thinking

Being able to have a plan, but be flexible with the plan as needed

Be on time

Make careful decisions

Make healthy choices

Being self-reliant

Being independent

Sticking to tasks

Making good financial decisions

Life Skills

Next Steps

Create POL
advisory

Develop
communication
plan

Share POL with
the community

Determine how
to collect
evidence

clean

sans
serif
font

main
color
green

accent
white or
blue

classy

use
icons

bold

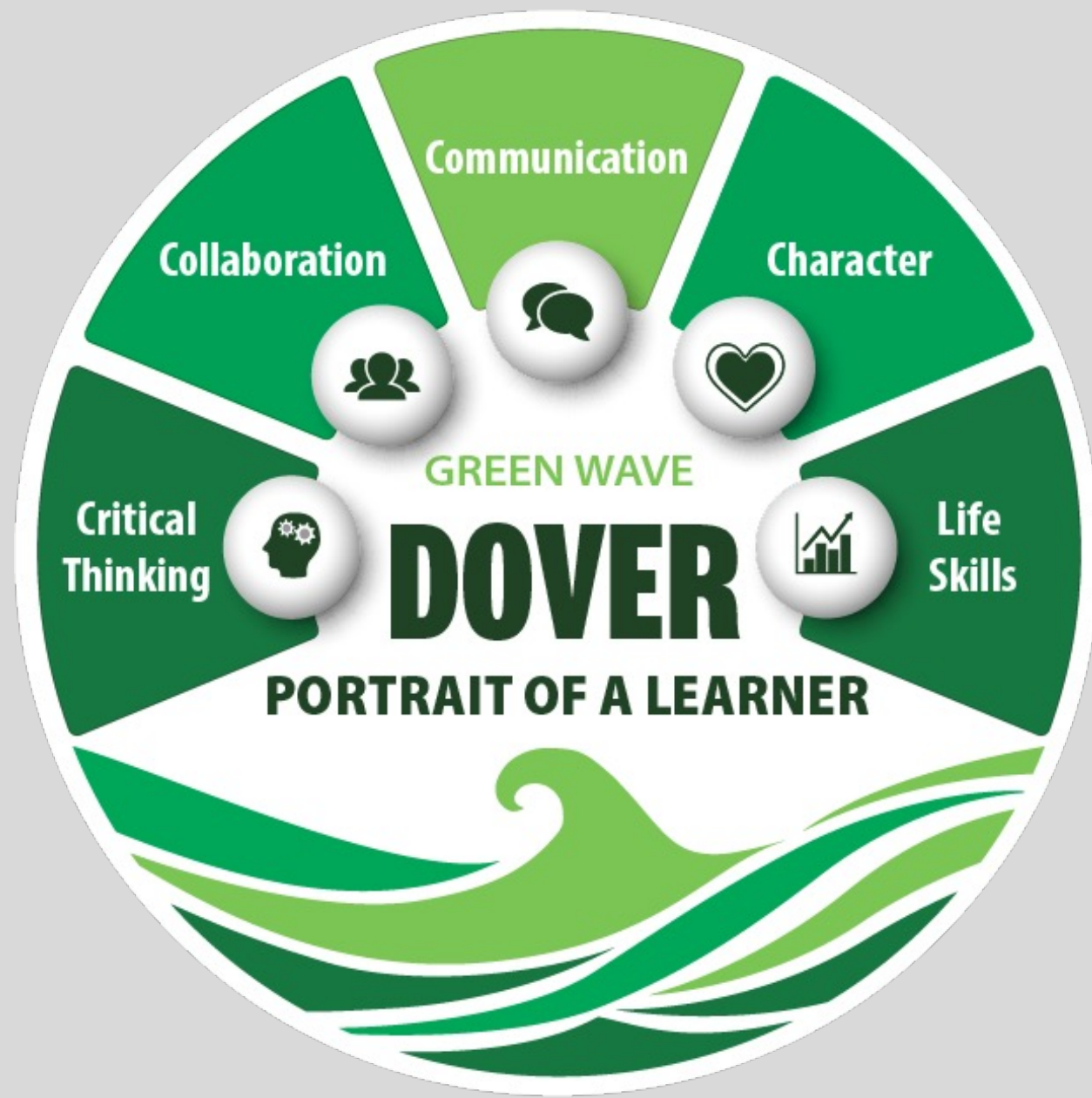
green
wave

minimal
text

bright

simple

modern



Communication

Collaboration

Character

Critical Thinking

Life Skills

GREEN WAVE

DOVER

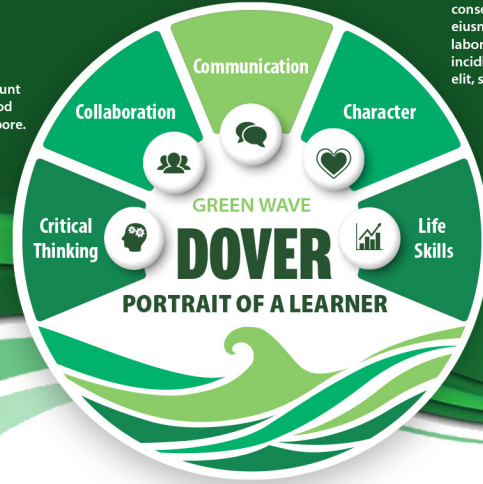
PORTRAIT OF A LEARNER

Collaboration ipsum dolor sit amet, consectetur adipiscing elit, sed do eiusmod tempor incididunt ut labore. Sed do eiusmod tempor incididunt ut labore. Adipiscing elit, sed do eiusmod tempor incididunt ut.

Communication Lorem ipsum dolor sit amet, consectetur adipiscing elit, sed do eiusmod tempor incididunt ut labore. Sed do eiusmod tempor incididunt ut labore. Adipiscing elit, sed do eiusmod tempor incididunt ut iusmod.

Character dolor sit amet, consectetur adipiscing elit, sed do eiusmod tempor incididunt ut labore. Sed do eiusmod tempor incididunt ut labore. Adipiscing elit, sed do eiusmod tempor

Critical Thinking dolor sit amet, consectetur adipiscing elit, sed do eiusmod tempor incididunt ut labore. Sed do eiusmod tempor incididunt ut labore. Adipiscing elit, sed do eiusmod tempor incidid ut labore.



Life Skills ipsum dolor sit amet, consectetur adipiscing elit, sed do eiusmod tempor incididunt ut labore. Sed do eiusmod tempor incididunt ut labore. Adipiscing elit, sed do eiusmod tempor.

The Dover Portrait of a Learner consectetur adipiscing elit, sed do eiusmod tempor incididunt ut labore et dolore magna aliqua. Quis ipsum suspendisse ultrices gravida. Risus commodo viverra maecenas accumsan lacus vel facilisis. Lorem ipsum dolor sit amet, consectetur adipiscing elit, sed do eiusmod tempor incididunt ut labore et dolore magna aliqua. Quis ipsum suspendisse ultrices gravida. Risus commodo viverra maecenas accumsan lacus vel facilisis. Lorem ipsum dolor sit amet, lacus consectetur adipiscing elit, sed do eiusmod tempor incididunt ut labore et dolore.

